

Katia Lifshin

Born in 1993 in Kherson, Ukraine, Katia Lifshin emerged as a visionary artist whose work transcends geographical boundaries and cultural landscapes. Her relocation to Holon, Israel at age four, followed by her move to the United States in 2012, has profoundly shaped her artistic narrative in of identity, transformation, and connection. During her studies in painting and sculpture at Pima College in Tucson, Arizona, the distinctive southwestern landscape catalysed a significant pivot in her artistic vocabulary, particularly in her development of a signature blue and green palette inspired by nocturnal observations at



Sabino Canyon. This period marked a crucial turning point in her understanding of colour, mood, and atmospheric representation.

Lifshin's artistic practice is a mesmerising exploration of surreal landscapes that blur the boundaries between human experience and natural phenomena. Her paintings manifest as otherworldly environments where reality merges with imagination. Her distinctive visual language features young female figures navigating ethereal landscapes, incorporating unusual natural phenomena such as bioluminescence and organic spiral forms. These elements serve as vehicles for exploring themes of personal metamorphosis and emotional resilience. She has continued to push the boundaries of surrealist painting, exploring themes of identity, self-image, and the intricate connections between human experiences and their environmental contexts. Employing a predominantly blue and green palette, Lifshin creates immersive atmospheric environments that encourage contemplative engagement. Her paintings oscillate between light and darkness, serving as metaphorical representations of emotional states and psychological journeys. From archival photography to direct observation of natural phenomena - resulting in compositions that operate on multiple conceptual levels. Through this approach, Lifshin constructs visual narratives that examine the intersection of personal identity and environmental context.

Katia Lifshin CV

b.1993, Ukraine

Lives and works in Israel.

Selected Solo Exhibitions

2023 *Shapeshifters*, Nassima Landau, Tel Aviv, Israel

2022 *Parallels*, Moosey Gallery, Islington, London

Selected Group Exhibitions

2025 *Portraits: Through The Looking Glass*, JD Malat Gallery, London, UK

2024 *Light Journeys*, solo show, Long Story Short, NY

2023 *Imagined States cp.1: Extrinsicity*, WOAW gallery, Hong Kong

2023 *Beyond this ocean*, Anna Zorina, Los Angeles, CA

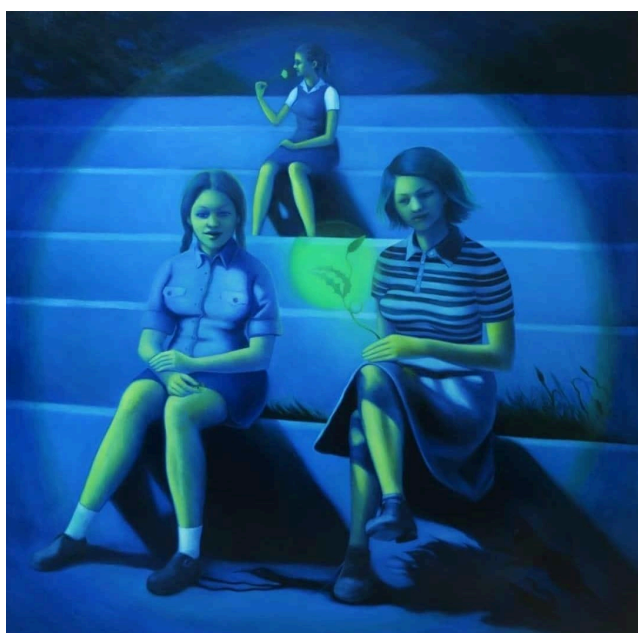
2023 *Blurry line of my feelings*, Garten gallery, Como, Italy

2022 *High Voltage 3*, Nassima Landau, Tel Aviv, Israel

2022 *Breaking news*, Another Gallery, Paris, France

2022 *Touch Wood*, Eve Leibe gallery with Prior art space, Berlin, Germany

Selected Artworks



Katia Lifshin
The seed, 2021
Oil on canvas
43 1/4 x 43 1/4 in
110 x 110 cm



Katia Lifshin
Staged fight, 2021
Oil on canvas
23 5/8 x 23 5/8 in
60 x 60 cm