

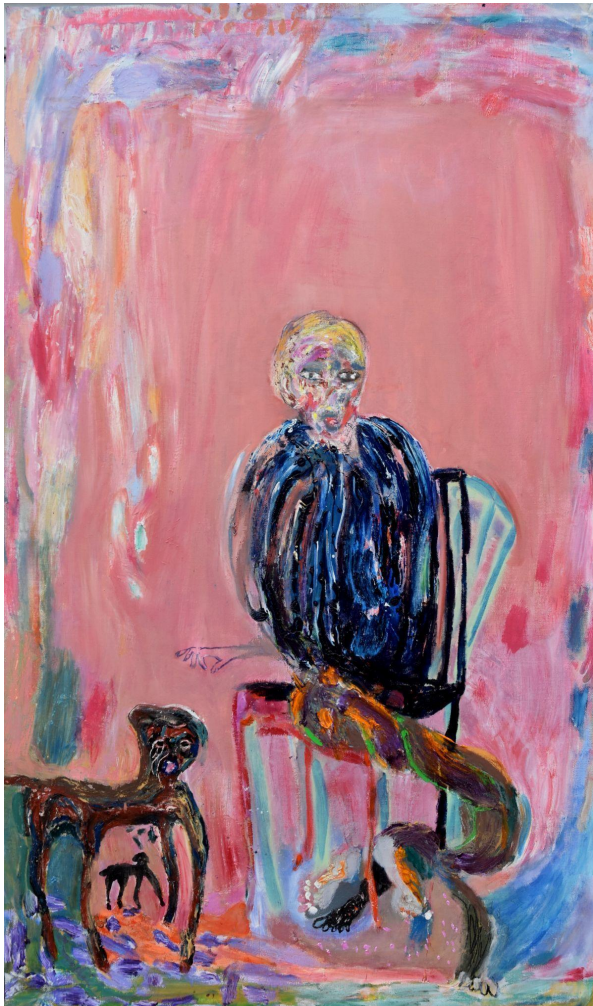
**Connect by Andrew Litten**

9 March – 8 April 2023

*"I want to create art that speaks of the love, anger, loss, personal growth and the private confusions we all experience in our lives.*

*I seek to create stories of authenticity that compress a sense of endurance of the human spirit. Empathy is powerful, and I hope for an unguarded creativity that connects with our shared mutual humanity."*

– Andrew Litten



Andrew Litten, *Adolescent Nurture*, 2023,  
Oil on canvas, 78 3/4 x 47 1/4 in, 200 x 120 cm.

JD Malat Gallery is pleased to present "Connect", the second solo exhibition by British artist Andrew Litten, on view in Mayfair from 9 March until 8 April 2023. This exhibition of new work further expands the expressive outreach of Litten's paintings with innovative and enchanting subject matter.

Initially self-taught, Andrew Litten (b. 1970) was determined to break free of restrictive environments, endeavouring to release his creative mind from the chains of societal conventions. Choosing to follow his own path, the artist adopted the inclusive and compassionate approach, sharing the stories of vulnerability and authenticity. Using empathy and connectedness as fundamental roots of his creative expression, Litten perpetually portrays the human metamorphosis, encapsulating love, pain, anxieties, mortality and joy in his colourful and dramatic compositions. The infinite sincerity of Litten's visual storytelling engages viewers with its genuine and at times poignant perspective, encouraging reflection on one's own temporality and ability to circumvent the challenges faced throughout one's lifetime.

While figurative works will feature prominently throughout the exhibition, Litten's new series will unveil his latest exploration of delicate still life compositions. Through expressive brushstrokes, Litten carves out the space for coalescing tranquillity with vibrancy and flamboyance. Depending on the context, flowers symbolise various notions, from reproduction, love, purity and decay, to hardship and transience. Litten's paintings possess powerful symbolism that deeply resonate with viewers, emphatically cultivating the messages of togetherness, support and the impermanence of human existence.

'Connect' demonstrates the diverse flair of Litten's artistic practice, showcasing the artist's remarkable ability to capture his subjects' vulnerability and embrace their weaknesses, offering a hope for rejuvenation. Following on from this solo exhibition, JD Malat Gallery will be displaying a life size bronze sculpture which will be the part of the forthcoming Chelsea Flower Show.

JD Malat Gallery is delighted to present Andrew Litten's enchanting works, powerfully emotive and moving, in its London gallery space. Litten has been exhibiting globally, in the United States, China, United Kingdom (including Tate Modern), Germany, Belgium and Italy. The exhibition catalogue of 'Connect' will be accompanied by an essay written by art historian Richard Davey, providing remarkable insights into Litten's extensive body of work.



Andrew Litten, *Flowers*, 2023,  
Oil on canvas, 33 1/2 x 21 5/8 in, 85 x 55 cm

---

*Litten's work bears the stamp of authenticity. The meanings of his images may be elusive, but they work on our feelings because they are felt.*

– Laura Gascoigne, independent arts writer, including *The Spectator*, *The Tablet*, *Jackdaw*.

*Litten's influences range from Edvard Munch, Vincent van Gogh, Paul Gauguin and Pierre Bonnard to Francis Bacon, Tracey Emin and Louise Bourgeois. Like Bourgeois, Litten mines pain to vivifying effect and it becomes a force for connection. "Through these works, I seek to create stories of authenticity and to explore the part of us that wants to care – to compress a sense of endurance of human spirit," Litten says.*

– Sophie Hastings, freelance features writer, including *Observer*, *The Gentlewoman*, *GQ*, *ARTnews*.

---

For more information, images and comment, please contact: [press@jdmalat.com](mailto:press@jdmalat.com)  
JD Malat Gallery, 30 Davies St, Mayfair, London, W1K 4NB  
Opening hours: Monday – Friday: 10am – 6pm, Saturday: 12pm – 6pm